



**LOCUST GROVE
MIDDLE SCHOOL
PRESENTS...**



**WHAT NOT
TO WEAR**

Distracting,
extreme
hairstyles
and hair color

Piercings other
than ears

**WHAT NOT
TO WEAR**



Sagging
pants or
shorts

Underwear
visible

WHAT NOT
TO WEAR

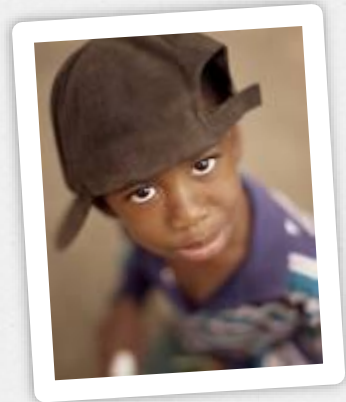


Clothing,
shoes, belts,
and jewelry
advertising
inappropriate
items and
messages

**WHAT NOT
TO WEAR**



Hats,
hoodies,
bandanas, or
beanies



**WHAT NOT
TO WEAR**

Holes or rips
above the
knee

WHAT NOT
TO WEAR



Shorts or skirts shorter than fingertips or not falling to middle of thigh

WHAT NOT TO WEAR



Sheer or see-through shirts
(unless over a shirt with
straps at least
3 fingers wide)

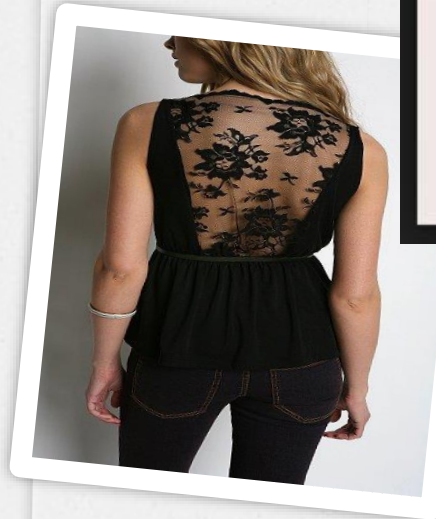
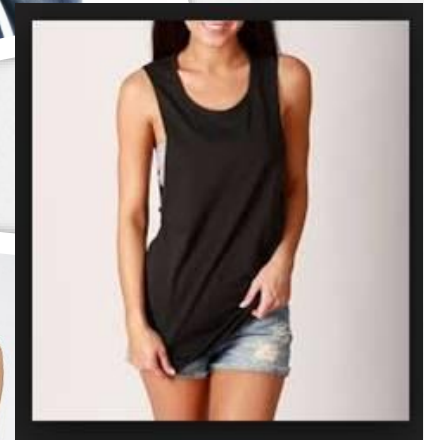
**WHAT NOT
TO WEAR**



Shirts or dresses
with open or see-
through backs

Shirts with
underwear
visible

**WHAT NOT
TO WEAR**



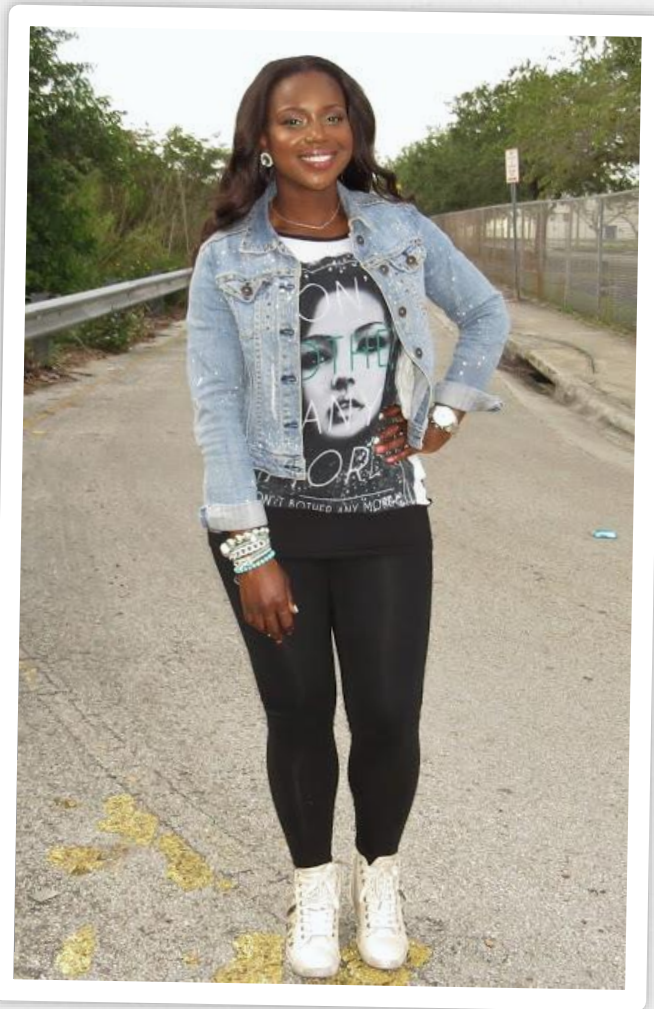
Strapless
shirts or
dresses

WHAT NOT
TO WEAR



Leggings,
spandex, or
tights unless
under a long
dress, shorts, or
skirt.

**WHAT NOT
TO WEAR**



Tank tops



**WHAT NOT
TO WEAR**



Blankets

Pajamas

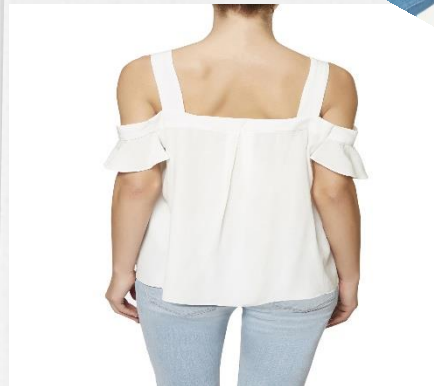
**Socks or bare
feet without
shoes**

**WHAT NOT
TO WEAR**



Cold-Shoulder Top with Thin Straps

WHAT NOT TO WEAR



1st Violation

In-School Suspension (ISS) for the remainder of the school day. Students may return to regular class upon correction of the dress code violation.

**WHAT NOT
TO WEAR**

2nd Violation

Students will be placed in ISS for three (3) days. If the violation is corrected before the expiration of the three (3) days, students may return to regular class after serving one full school day in ISS.

3rd Violation

Students will be placed in ISS until the violation is corrected.